

Students who do not have a personal device, or are borrowing

BYOD at Oxley College

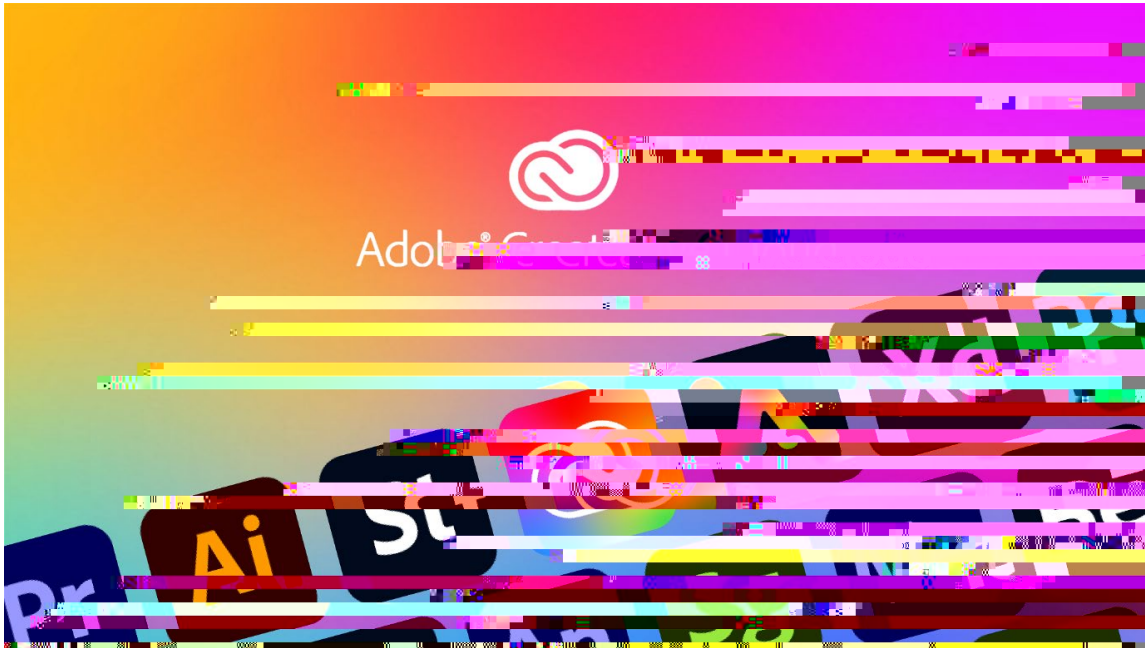
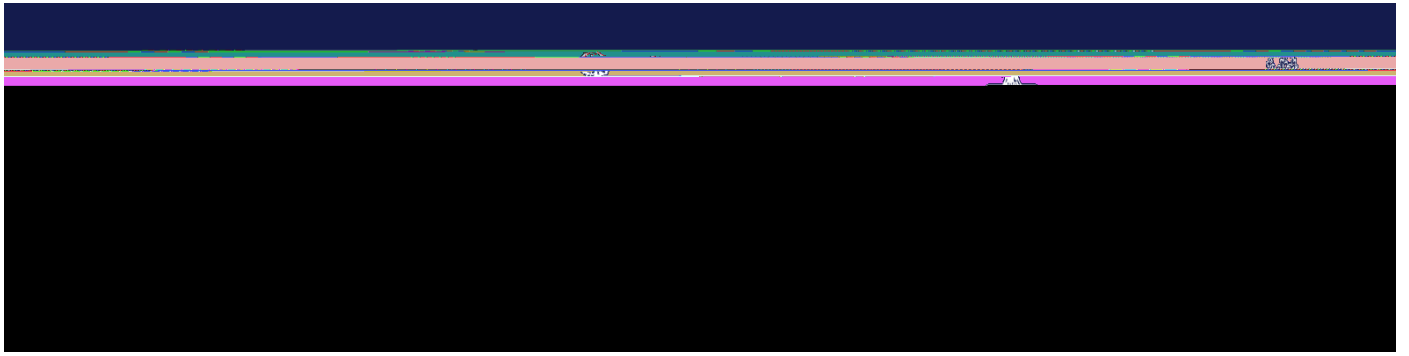
Devices are essential to learning at Oxley College. These devices are essential to learning at Oxley College. At Oxley College, we encourage students to bring a computer to Oxley College to support their learning needs. Computers are controlled student devices. Oxley College encourages and personalising a student's education, and student-owned devices facilitate student choice over which device best suits their learning and communication style.

Under the programme, a laptop of a minimum standard is supplied privately by the student and their family then

Microsoft 365 A3 for students

Benefits include:

- We provide an "@oxley.nsw.edu.au" student email address.
- Office apps on up to 5 devices:
 - Outlook
 - Word
 - Excel
 - PowerPoint
 - ..and more!



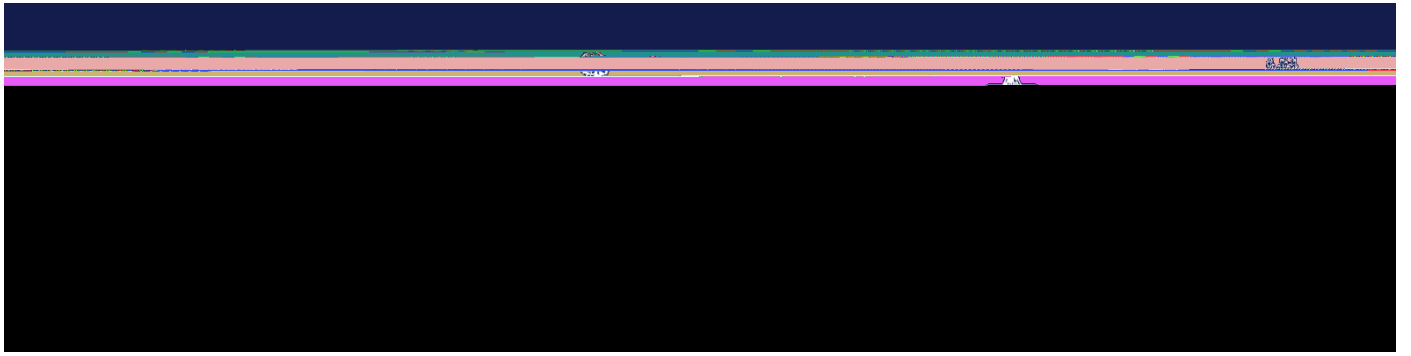
Help and Support

We have an IT Helpdesk onsite, located in the library. Standard services include:

- Connecting your BYO computer to the school Wi-Fi and printer.
- Assistance installing college approved apps.
- Provide a loan laptop if your child's computer is away for repair (subject to availability).

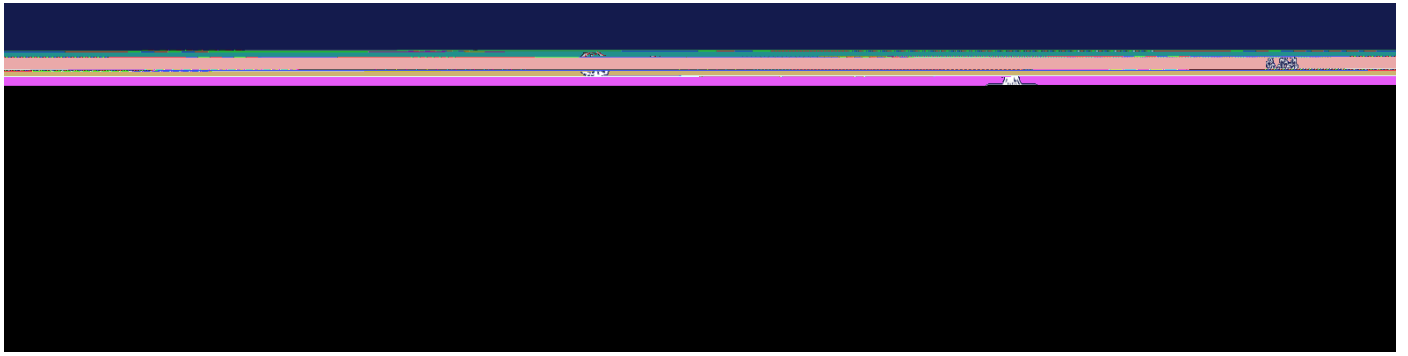
The helpdesk will make a best effort attempt to resolve any software issues and assist in troubleshooting hardware problems. If a case needs to be referred to a carer or parent, the Helpdesk agent will do so through a representative of the Academic team such as a teacher, student mentor or Head of House.



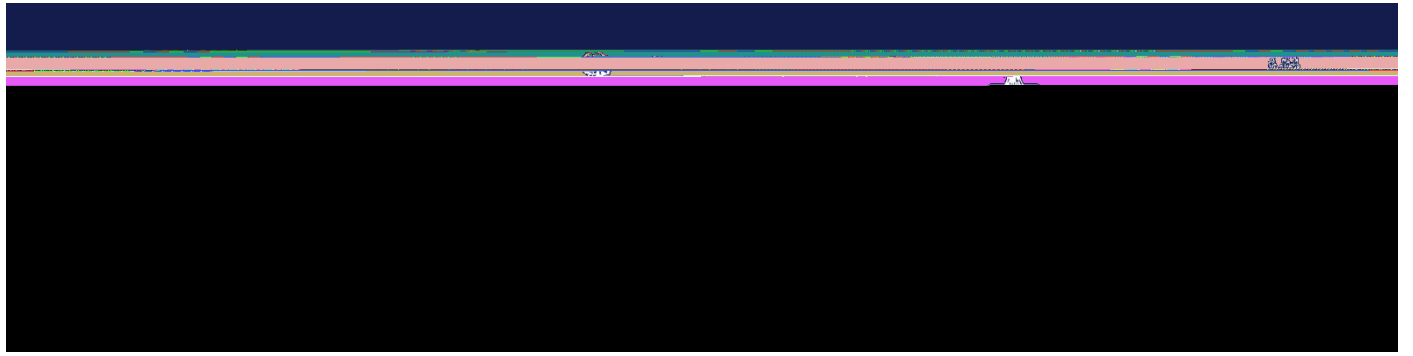


Network security

As part of our Duty of Care for students, we utilise a variety of tools to protect our network and to ensure your child is



- Please consider whether digital inking (using a stylus to take notes or for digital illustration) is a potential requirement. Many devices support touchscreens but do not have digital stylus support.



Storage

256Gb

- Accidental Damage Protection is highly recommended.
- Extended warranty to 3-years of coverage is highly recommended.
- Biometric login capabilities such as face unlock, or fingerprint reader are highly recommended.

These minimum specifications and recommended extras are reviewed each year.